

Figure 1. Determination of \bar{x}^i .

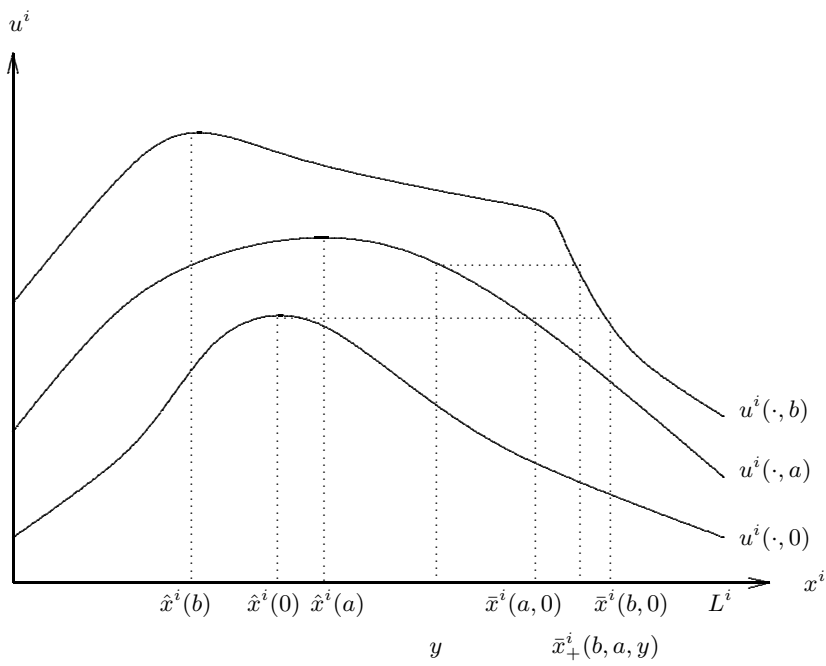


Figure 2. Determination of $\bar{x}_+^i(b, a, y)$.

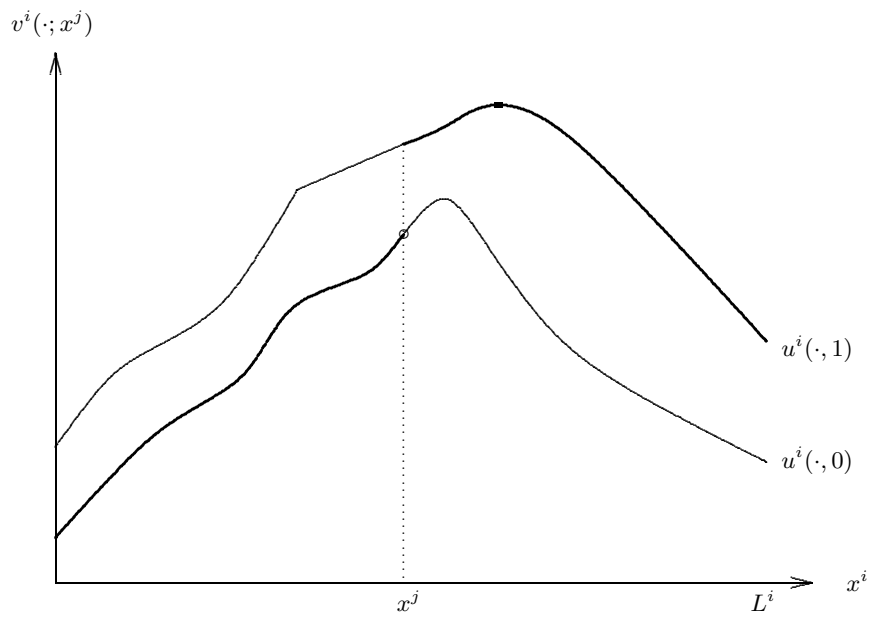


Figure 3. Case $N = 2$. Conditional payoff function of player i .

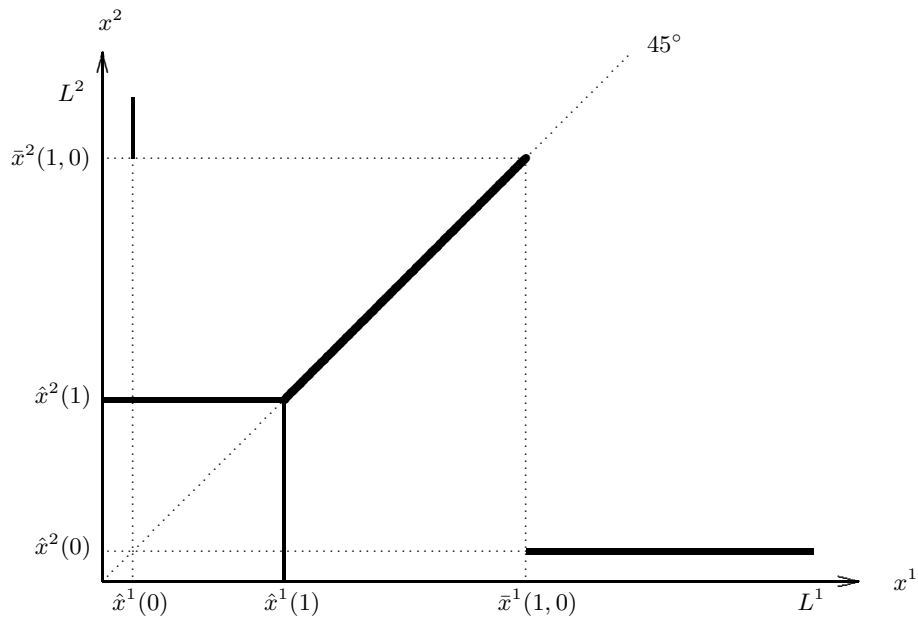


Figure 4. Homogeneous players. Infinite many Nash equilibria. (All fully diverse equilibria.)

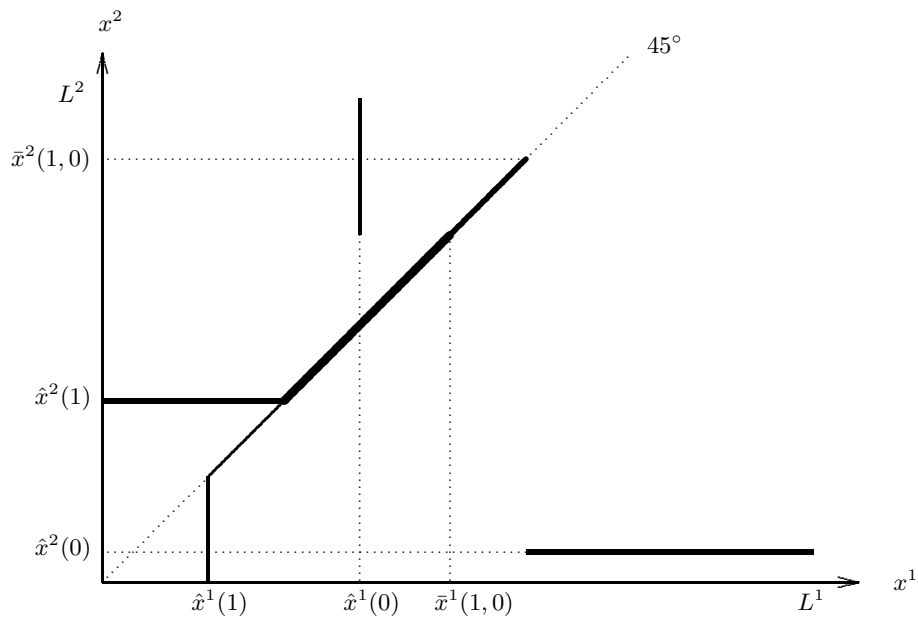


Figure 5(A). (Infinite many Nash equilibria. (All clustering equilibria.)

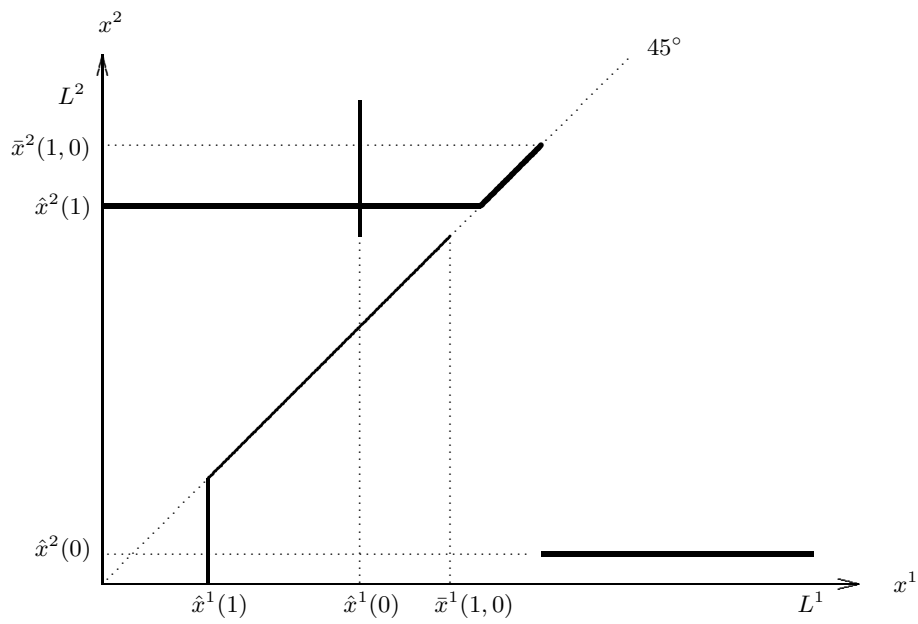


Figure 5(B). A unique Nash equilibrium. (A fully diverse equilibrium.)

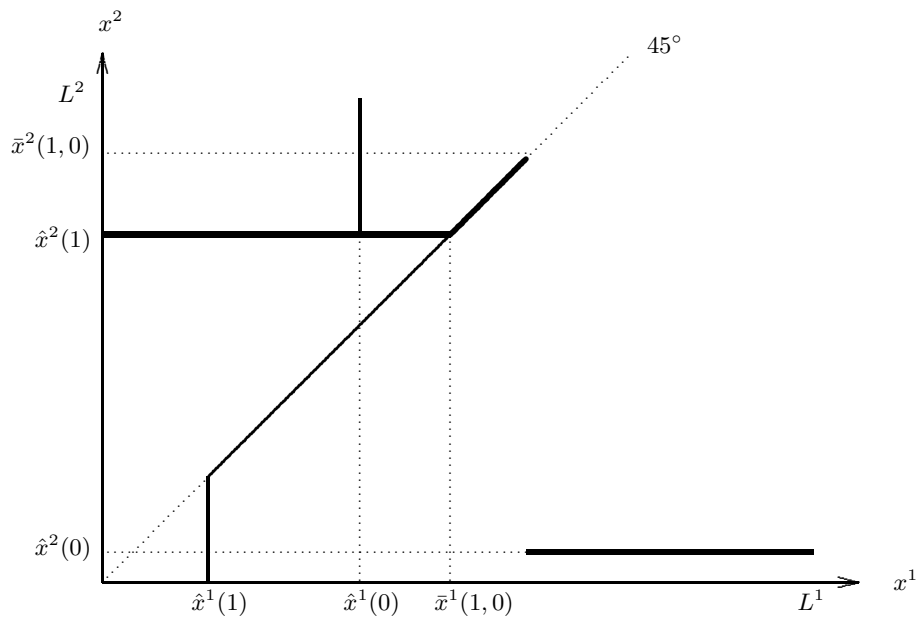


Figure 5(C). Two Nash equilibria. (A fully diverse and a clustering equilibrium.)